

# XODUS™

LOW LEVEL BULK CONTAINER DEPALLETER

**Priority One**



## Maximize your plants productivity with Xodus™

The **Xodus™** Low Level Bulk Container Depalletizer from Priority One® is a high efficiency system designed to remove layers of containers from a pallet and transport the containers to an accumulation table or infeed conveyor. The system can operate automatically with options to remove tier sheets, picture frames, inverted trays and pallets.

The **Xodus™** operates on-demand, performing all functions simultaneously, resulting in output speeds of up to 4 layers per minute including pallet change. Minimal operator attention is required and changeovers for different size containers can be made in five minutes by a single operator.

The unique design and workflow easily adapts to variations between layers and pallet loads. Photo eyes and proximity sensors monitor load level and load height, providing the system flexibility to operate effectively even when pallet loads are not completely perpendicular. Minimal pallet load movement takes place during product transfer.

Quality, heavy-duty construction provides smooth, vibration-free operation. Lift and carriage motors are driven through variable frequency AC controllers, and the unique design of transfer mechanisms reduces electro-mechanical wear.

The design and manufacturing standards employed by Priority One® enable this system to deliver years of low maintenance, trouble free performance, while providing the flexibility to adapt to changing load configuration demands.

### Continuous Operation For Maximum Productivity

All individual operations – product capture, sweeping, product discharge, etc. operate simultaneously. This significantly reduces idle time, maximizing depalletizer efficiency.

The automatic cycling features are interrupted when material flow is disrupted or a downstream problem occurs. The system automatically restarts when the disturbance has been corrected. In this regard the **Xodus™** Low level Bulk Container Depalletizer is truly an on-demand system, automatically compensating for any interruption in supply or discharge availability.



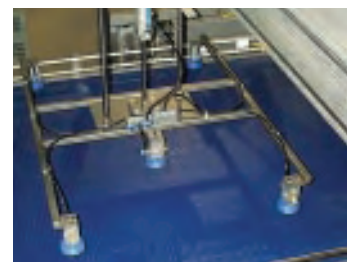
*Priority One® uses timing belts to reduce wear, backlash and tensioning found with comparable chain drive systems.*



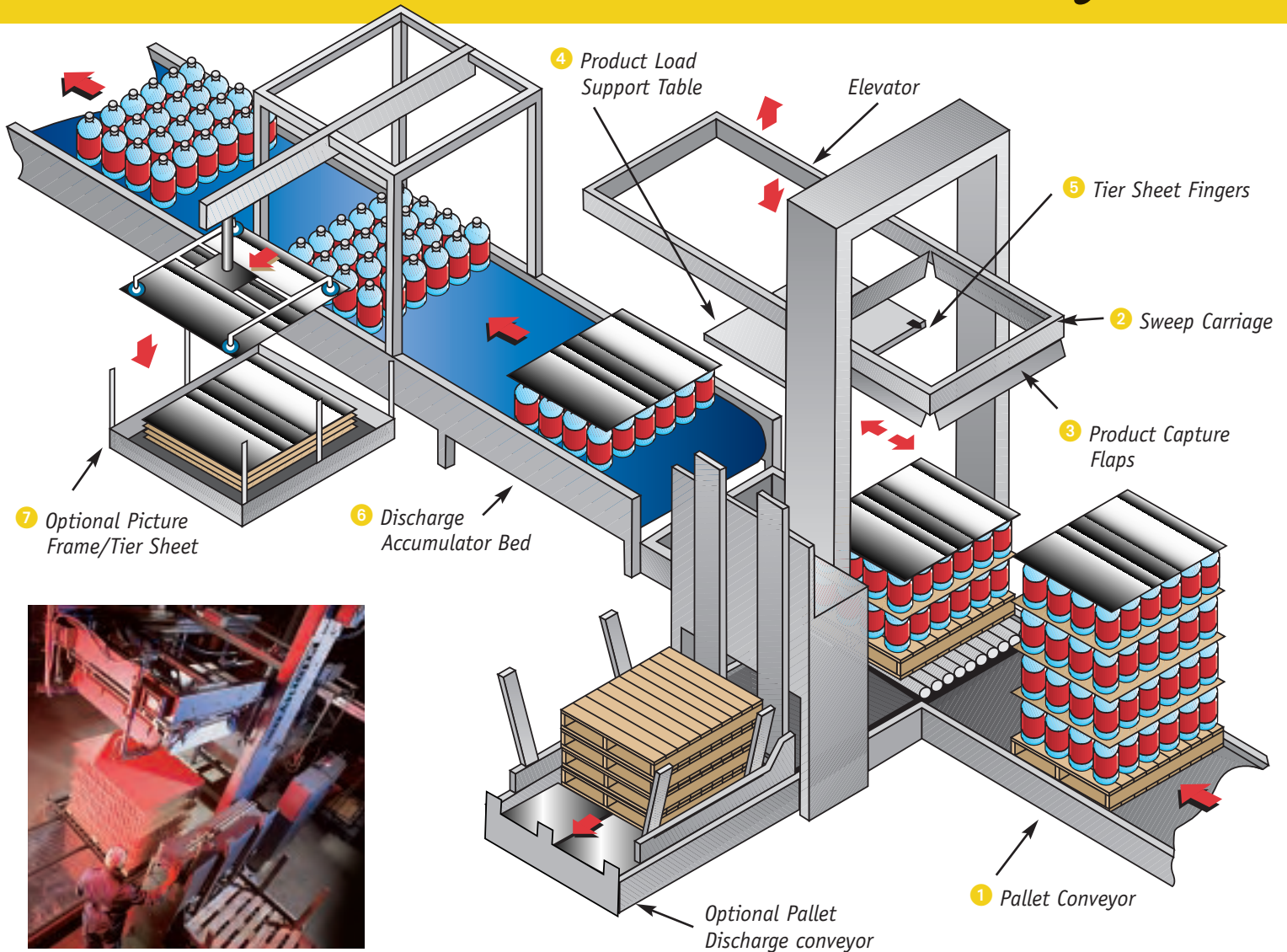
*Priority One® consolidates and integrates all facets of the production line into one comprehensive control operating system.*



*Our optional automatic pallet stacker enables the bulk container depalletizer to operate with minimal operator attention.*



*Our optional tier sheet remover enables the Xodus system to remove tier sheets, inverted trays and picture frames automatically.*



## Xodus Configuration and Options

- 1 A full load is placed on the pallet conveyor with two straps and all wrapping removed.
- 2 The pallet moves on-demand into the depalletizing station, where the sweep carriage, governed by an encoder, lowers over the top layer.
- 3 Four flaps close around the layer to capture the products.
- 4 Guided by photo eyes, the product load support table moves in toward the lower leading edge of the product layer.
- 5 When the load table is in position, the product side of the table lowers slightly to engage a pair of tier sheet fingers. These fingers prevent the tier sheet on top of the lower layer from moving when the layer transfers to the load table.
- 6 The carriage sweeps the product layer from the pallet onto the load table. With the load still secured by the flaps, and covered by a tier separator, the load table moves to the discharge/accumulator bed. The table adjusts to the precise height and position of the bed. The carriage sweeps products from the product load table to the discharge/accumulation conveyor. When the products are positioned on the conveyor, the forward product flap opens 90 degrees and the other three flaps relax. The sweep carriage is then lifted out and up to avoid disrupting the load.
- 7 The conveyor moves the products into position for picture frame/tier sheet removal. The optional automatic unit lifts tier sheets and picture frames with vacuum pickup cups, and discharges them into an accumulation bin. During operation of the tier sheet unit, the depalletizer is sweeping another layer onto the load table. However, the next layer will not advance until the preceding one clears a photo eye at the tier removal station.

# XODUS™ Low Level Bulk Container Depalletizer

## PRODUCT SPECIFICATIONS

### STANDARD FEATURES

- Heavy duty elevator system
- Sweep carriage
- Positioner frame
- 14' accumulation bed with Intralox Series 1100 belting or equivalent dependent on product sensitivity

### CAPACITY

- 4 layers per minute, including pallet change

### POWER

- 230/460/575 volt electric's
- 120 volt 1-phase 60 Hz control circuitry

### AIR

- 1 m<sup>3</sup>/hour @ 80 PSI

### DRIVE MOTOR

- 7 1/2 HP Eurodrive gear motor

### MATERIAL AND FINISHES

- Heavy-duty steel plate construction
- "Steel-it" enamel paint finish

### MACHINE DIMENSIONS

- Machine dimensions depend on configuration.  
(Refer to diagrams for sample layouts)

### WEIGHT

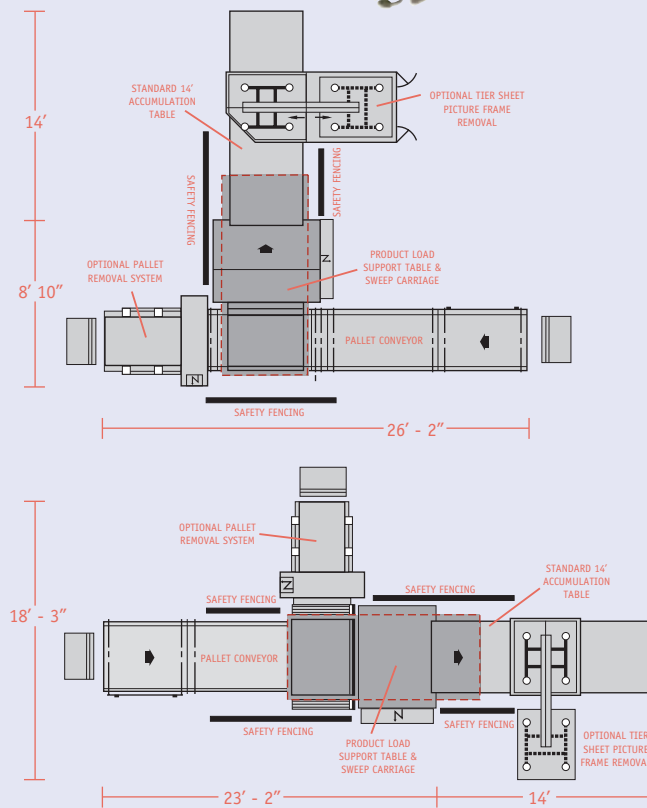
- Approximately 6,000 lbs. (2,700 kg)

### CHANGEOVER TIME

- Five minutes for a single operator

### OPTIONAL EQUIPMENT

- Tier sheet/picture frame removal unit
- Lift truck ram protection
- Remote operator console
- Automatic pallet magazine
- Additional options available on request



# Priority One

Priority One Packaging Ltd. 815 Bridge Street, Waterloo ON Canada N2V 2M7  
 Phone: 519.746.6950 • Fax: 519.746.3578 • Toll Free: 800.387.9102  
[www.priorityonepackaging.com](http://www.priorityonepackaging.com)